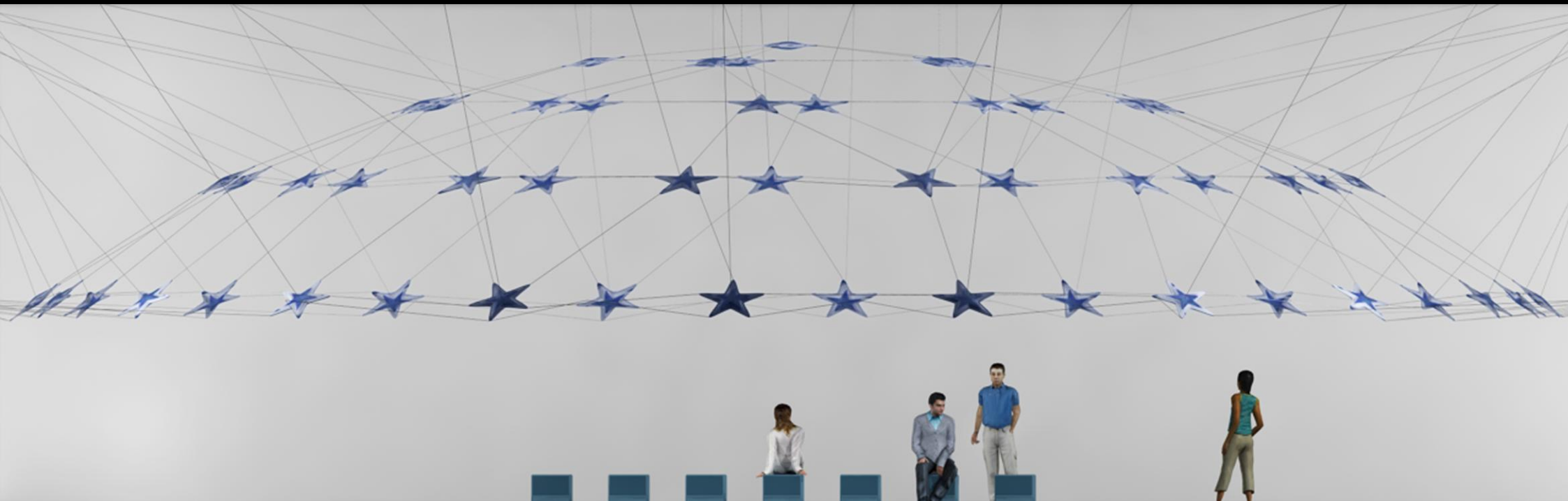


STARRY DOME

a sculptural project ■ suspended dome

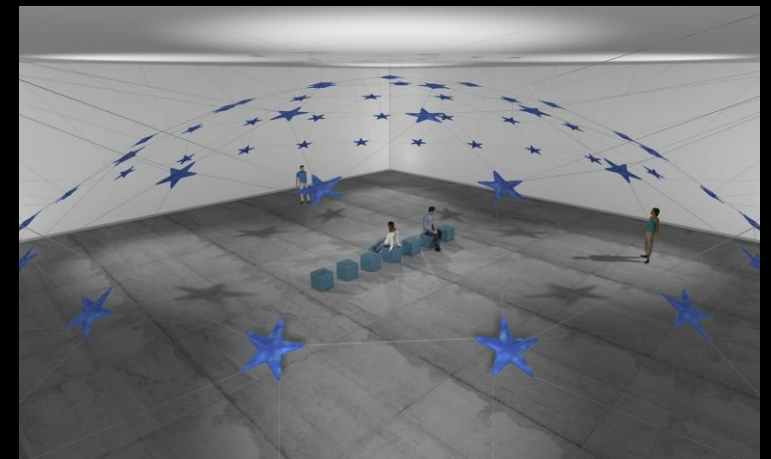
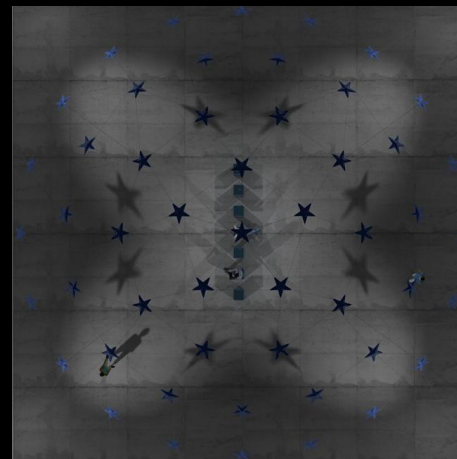
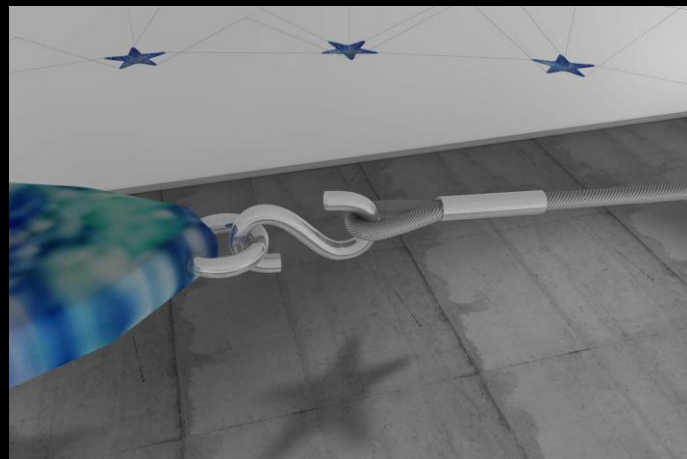
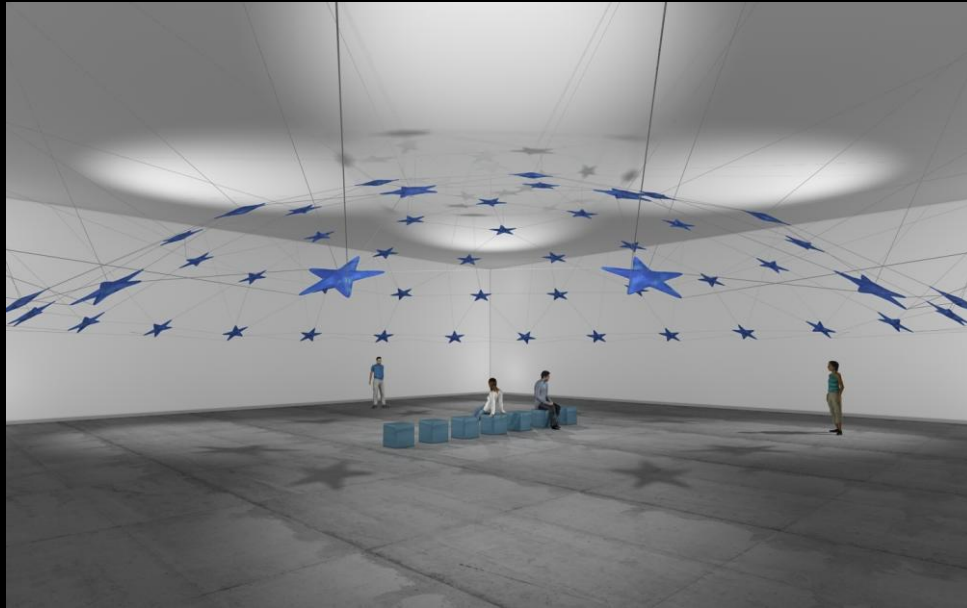


A suspended nodal sculpture, designed as an exercise in constructive balance, built by suspending a structural lattice of 51 sculptural elements – in the shape of 5 point stars of up to a maximum diameter of 80cm – interconnected with thin 1.5mm steel wires; a tensed structure.

The sculpture is fixed to the wall of the hall by 90 metal wires, connected to 56 anchors. 50 anchors are arranged in two lines or levels on the walls and 6 on the ceiling, which allow the generation of the curve dome effect, light and clean. The pieces are connected to one another by a lattice of 100 1.5mm steel wires under tension.

The project described in this document is designed for installation in a hall measuring 20 x 20 m with a height of 6m. This is merely a suggestion; the piece can be adapted, rescaled and reformulated for other dimensions and locations, both interior and exterior.

impressions, sculptural elements & details of **Starry Dome**, from different viewpoints within the room



art, investigation & development
www.alfonsodonzel.com